

Sana Vani <sup>1a,\*</sup>,  
 Yarrapragada K S S  
 Rao<sup>b</sup>,  
 N Sirisha<sup>a</sup>,  
 M P Subba Raju<sup>a</sup>,  
 G.Chatapathi Raju<sup>c</sup>,  
 B Rajani<sup>a</sup>,  
 Chitturi Ramprasad<sup>b</sup>,  
 J M Kanthi Thilaka<sup>d</sup>,  
 R Srinivas <sup>a</sup>

## Optimizing AVR and DG Locations in Distribution Systems with Artificial Bee Colony Algorithm



**Abstract:** - Distributed Generation (DG) penetration in distribution networks has increased dramatically in recent years as power markets have improved. Aside from serving loads locally, the installation of DG has a number of technical advantages, including improved voltage profile and lower network loss. Using an Automatic Voltage Regulator (AVR) in conjunction with DGs maximizes technological benefits. This study investigates the influence of DG and AVR placement with the purpose of decreasing network losses. The Ant Bee Colony (ABC) solves the optimization problem. The effectiveness of the proposed approach is proven with a standard IEEE 69-bus distribution network.

**Keywords:** Distributed Generation, Automatic Voltage Regulator, Ant Bee Colony.

### 1 INTRODUCTION

Industrial growth, rapid urbanization, and increased electric gadget affordability are all contributing to a lack of energy generation to meet expanding demand. To maximize economic gains while also conserving energy, generated electricity must be used efficiently. Power losses at the distribution level are mostly caused by low voltages, high currents, and overload conditions. Energy conservation through network reconfiguration, capacitor allocation, and reconductoring is becoming more significant. However, its effectiveness is limited because it only injects reactive power into the network. The usage of Distributed Generation (DG) for loss reduction has risen in popularity as a result of the restructuring of the electric power system [1].

Various analytical and meta-heuristic strategies have been used by researchers to solve the problem of DG and capacitor allocation. Prasad optimally selects conductors and places capacitors to minimize system costs using the Harmony Search Algorithm, analysing both annual energy loss and investment costs. Implemented on an 85-bus system, this approach effectively reduces losses, lowers costs, and improves the voltage profile [2]. Renewable distributed generation (RDG) deployment has increased due to environmental concerns, offering benefits like loss reduction, improved voltage profile, and reduced line loading [3]. Meta-heuristic techniques, including the Artificial Bee Colony (ABC) algorithm [4], Harmony search algorithm (HSA) [5], Flower pollination algorithm [6], Grey Wolf Optimizer [7], and improved teaching learning-based optimization algorithm [8], were used to solve the DG allocation problem and reduce active power loss. Das [9] employed the Fuzzy-GA approach and Plant Growth Simulation program to tackle the shunt capacitor allocation problem. Bhattacharya and Goswami [10] employed a Fuzzy approach to detect locations and Simulated Annealing to optimize capacitor sizes, reducing both loss and capacitor costs. A few authors investigated the influence of DG location and capacitors in distribution systems.

The goal of this research is to use GA to determine the ideal sizes and positions for DGs, as well as the optimal tap settings and placements for AVRs in a radial distribution network. Ravindra proposes an improved Pareto

<sup>1a</sup> Department of Electrical and Electronics Engineering, Aditya University Surampalem, 533 437, India

<sup>b</sup> Department of Mechanical Engineering, Aditya University Surampalem, 533 437, India

<sup>c</sup> Department of Mechanical Engineering, Sagi Rama Krishnam Raju Engineering College (A), Bhimavaram-534204, India

<sup>d</sup> Department of Humanities and Basic Sciences, Aditya University Surampalem, 533 437, India

multi-objective backtracking search algorithm for optimal DG and AVR allocation in distribution systems [11]. The optimal allocation problem is solved within the restrictions of maximum DG penetration limit, thermal limit of branches, tap position of AVRs, injected active and reactive power limits of distributed generators, and allowable bus voltage limits [12-13]. Finally, it suggests using NSGA-II optimization for DG, capacitor, and AVR allocation to improve voltage, minimize losses, and enhance network reliability, with testing on IEEE 33 and 69-bus systems [14]. Here the proposed approach is applied to find out optimal placement of DG and AVR for different scenarios for minimizing the objective functions power loss and voltage deviation.

## 2 PROBLEM FORMULATION

The primary objective of this project is to reduce active power losses directly contributes to an improvement in bus voltage levels. By optimizing the power flow across branches, we aim to achieve a significant reduction in network power loss.

To accomplish this, the strategic placement of Distributed Generators (DGs) and Automatic Voltage Regulators (AVRs) is a key focus. DGs help to decentralize power generation, thereby reducing the distance power must travel, which in turn minimizes losses. Meanwhile, AVRs work to maintain voltage levels within optimal ranges, ensuring consistent and efficient power delivery. This coordinated approach not only minimizes active power loss but also contributes to reduce voltage deviation in distribution network.

### 2.1 Objective function

The primary objective of this study is to achieve loss reduction in the power distribution network. This goal is quantified using a target function, which is defined as the ratio of the network's power loss with the integration of Distributed Generators (DGs) and/or Automatic Voltage Regulators (AVRs) to the power loss in a base case scenario.

In this context, "base case power loss" represents the power loss within the network when no DGs or AVRs are utilized. By comparing the modified network's performance against this baseline, the study can effectively assess the impact of DG and AVR placement on reducing power loss, thereby highlighting the improvements in voltage deviation.

$$f_p = \left( \sum_i^{Nbr} PL_i^{with\_DG/AVR} \right) / \left( \sum_i^{Nbr} PL_i^{base} \right) \quad (1)$$

The optimization problem is solved using the following constraints:

(i) Voltage Constraint

$$V_{\min} \leq V_i^{with\_DG/AVR} \leq V_{\max} \quad (2)$$

(ii) Branch current limits (Thermal limits)

$$I_i \leq I_{cap} \quad (3)$$

(iii) DG power capacity constraint

$$P_{DG\_min} \leq P_{DG_i} \leq P_{DG\_max} \quad (4)$$

(iv) Tap settings Constraint for AVR

$$T_{\min} \leq T \leq T_{\max} \quad (5)$$

where  $PL_i^{with\_DG/AVR}$  represents the total real power loss with DG and/or AVR,  $PL_i^{base}$  corresponds to the total real power loss with base case,  $V_{\min}$  is the Minimum voltage,  $V_{\max}$  is the Maximum voltage,  $P_{DG\_min}$  is the Minimum DG power capacity,  $P_{DG\_max}$  is the Maximum DG power capacity,  $T_{\min}$  is the Minimum tap setting,  $T_{\max}$  is the Maximum allowable tap setting.

### 2.2 Automatic Voltage Regulator (AVR) model

To assess the influence of Automatic Voltage Regulators (AVRs) on the distribution network, a detailed model is developed [9]. An AVR operates as an autotransformer equipped with a tap-setting control mechanism on its windings, enabling precise regulation of voltages across the distribution network. Positioned strategically between buses A and B, the AVR is initially set with a tap setting denoted as 't' and an internal admittance represented by 'Y', as illustrated in Fig. 1.

In this model, the AVR is depicted as a combination of series and parallel admittances, as shown in Fig. 2. This configuration allows for accurate simulation of the AVR's impact on the network's voltage profile and power flow. By adjusting the tap setting, the AVR can dynamically maintain voltage levels within desired limits, thereby improving the voltage deviation at each bus in the network.

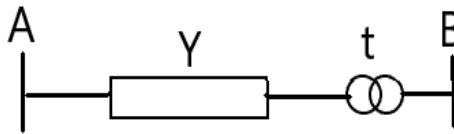


Fig. 1 AVR model in branch

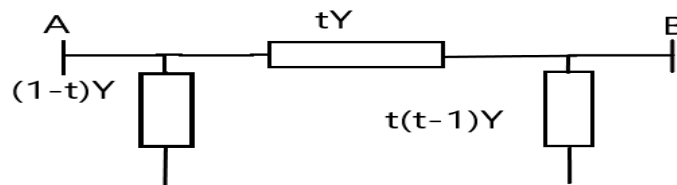


Fig.2 π model representation of AVR

When the tap setting of the autotransformer is adjusted from its initial value t by an increment Δt, the AVR model requires modification, as depicted in Fig. 3. To represent this variation in tap position, an alternative modeling approach involves adjusting the configuration in Fig. 3 by introducing imaginary injection currents,  $I_A$  and  $I_B$  as shown in Fig. 4.

These fictitious injected currents, defined by equations (6) and (7), enable an accurate simulation of the effects of tap changes on the network without physically altering the transformer setup. By incorporating these injection currents into the model, we can replicate the impact of varying tap positions on the voltage profile and power flow, allowing for a precise analysis of AVR performance in maintaining optimal network conditions.

$$I_A = (1 - (t + \Delta t)) * Y * V_B \tag{6}$$

$$I_B = (1 - (t + \Delta t)) * Y * V_B + ((t + \Delta t)^2 * Y * V_B) \tag{7}$$

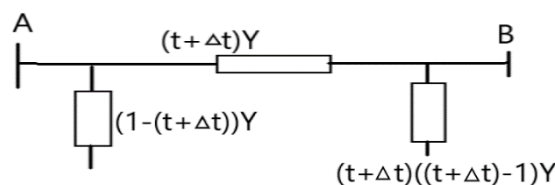
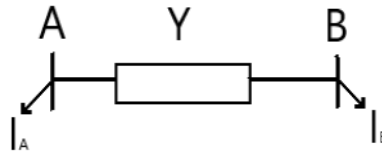


Fig. 3 AVR model including tap position variation



**Fig. 4 AVR equivalent with fictitious current injections**

### 2.3 Ant Bee Colony

Ant Bee Colony (ABC) is a metaheuristic optimization technique designed to navigate complex search spaces by avoiding local optima through memory-based strategies. The step-by-step process is as follows:

**STEP 1:** Define the objective function to optimize and identify the initial solution. Generate initial food sources.

**STEP 2:** Employed Bee Phase with Search for new food sources, Evaluate the fitness of the new solution and track unsuccessful attempts.

**STEP 3:** Calculate the objective function value for each candidate solution.

**STEP 4:** Select the best aspiration-satisfying solution from the neighborhood as the new current solution. Update the list by adding the recent move and removing expired entries. Streams production to Improve optimal solution from the below equation

**STEP 5:** Continue generating neighborhoods, evaluating, and updating solutions until the stopping criteria are met.

### 2.4 Proposed Approach

**Step 1:** Define loss as objective function, DG sizes and locations, Tap changers and locations as decision variables. Initialize MWCA parameters and specify the IEEE 69-bus test system line and load data, constraints.

**Step 2:** Initialize the ABC with solution vectors (DG sizes and locations, Tap changers and locations).

$$SV = [DG_1^1 \ DG_2^1 \ \dots \ DG_N^1 \ L_1^1 \ L_2^1 \ L_3^1 \ \dots \ L_N^1 \ T_1^1 \ T_2^1 \ T_3^1 \ \dots \ T_N^1 \ TL_1^1 \ TL_2^1 \ TL_3^1 \ \dots \ TL_N^1] \quad (11)$$

Each solution vector in ABC is evaluated by finding the objective function value by running a load flow. Backward-Forward Sweep method is used determine load flows. Sort the solution vectors in ABC based on their ascending order of functional values.

**Step 3:** Determine the best solution from the raindrops.

**Step 4:** Generate a fresh set of solutions

**Step 5:** Check the termination criteria and stop.

## 3 RESULTS

To verify the efficacy of the proposed approach, it is tested on an IEEE 69-bus system which is a 12.66 kV system whose data is taken from [15].

Four scenarios are simulated in this work.

Scenario I: System without DGs and AVRs (Base case)

Scenario II: System with AVRs only

Scenario III: System with DGs only

Scenario IV: System with DGs and AVRs (Proposed approach)

Bus voltage deviations of the system is computed as given in (12)

$$V_{dev} = \sum_{i=2}^{nbus} (V_i - 1)^2 \quad i = 1, 2, 3, 4, \dots, nbus \quad (12)$$

where *nbus* represents total number of nodes and  $V_i$  is the  $i^{th}$  bus voltage.

**Table 1. Results of IEEE 69-bus Test System**

Planning Cases	DGs placement and rating		AVR locations and Tap ratio				Total Real Power loss (kW)	Minimum bus voltage (p.u)	Voltage deviation
	Bus No.	Ratings (MVA)	Branch no.	Tap ratio	Branch no.	Tap ratio			
Scenario-I	----	----	----	----	----	----	224.98	0.9091	0.0993
Scenario-II	----	----	56 59 61 62	0.9000 1.0875 0.9125 0.9625	----	----	196.82	0.9141	0.0897
Scenario-III	65 26 60 62 61	0.56 0.40 0.59 0.51 0.27	----	----	----	----	14.94	0.9884	0.0036
Scenario-IV (AGA) [16]	21 61 62 63 64	0.441 0.572 0.348 0.539 0.428	5 6 7 8 9 10 11 44	1.0989 1.0938 1.0984 0.9014 1.0906 1.0983 1.0958 1.0509	48 49 55 57 59 66 68	1.0637 1.098 0.9237 1.063 0.9098 0.9305 0.9092	11.87	0.9953	0.00076
Scenario-IV HSA[17]	61 60 62 65 23	0.76 0.38 0.48 0.32 0.38	13 25 10 35	1.0813 0.9125 0.9188 0.9813	----	----	10.44	0.9904	0.0026
Scenario-IV ABC	61 21 63	0.0016 0.0061 0.0150	42 24 37	0.9202 0.9805 0.9677	----	----	17.91	0.9831	0.0034

In this study, DG penetration is capped at 50%, with all DG units operating at a lagging power factor of 0.85. The results for the four scenarios are summarized in Table 1. The total real power loss in the network is 224.98 kW for Scenario I, decreasing to 196.821 kW in Scenario II. Scenario III further reduces the loss to 14.94 kW, while

Scenario IV achieves 11.87 kW using the Adaptive Genetic Algorithm (AGA) [13] and 10.44 kW with the proposed ABC. A comparison of Scenario IV solutions indicates that HSA achieves superior power loss mitigation compared to AGA. Although the proposed Ant Bee Colony (ABC) method provides better voltage deviation performance compared to AGA, it is less effective than HSA in reducing power loss.

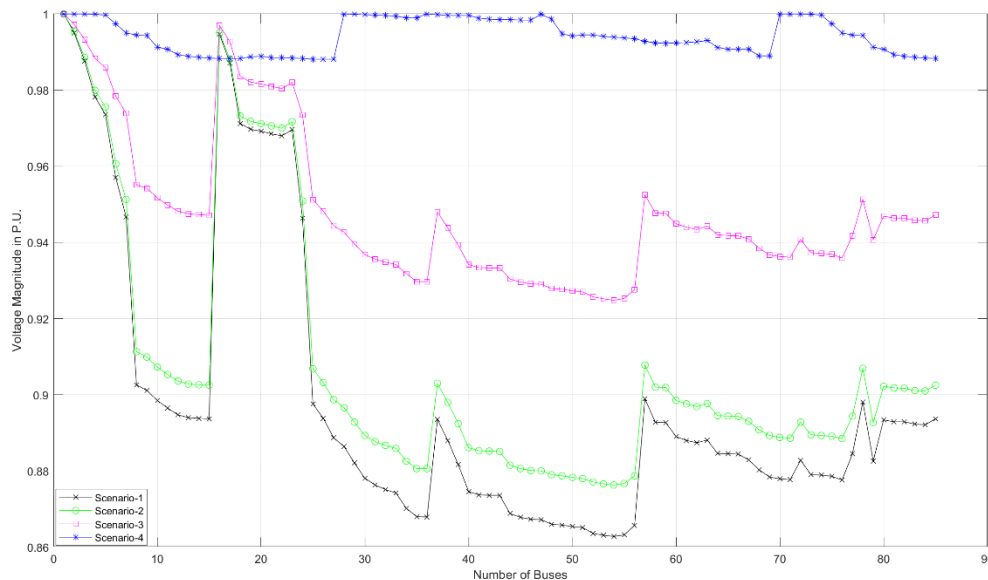
Table 1 indicates that in Scenario IV (AGA), deploying 5 DGs and 15 AVRs results in a power loss of 11.87 kW. In Scenario IV (HSA), the loss is reduced to 10.44 kW with 5 DGs and 4 AVRs. Meanwhile, Scenario IV (ABC) achieves a power loss of 17.91 kW using 3 DGs and 3 AVRs. These findings demonstrate that the proposed Ant Bee Colony (ABC) method outperforms the AGA-based approach. Moreover, the proposed method achieves the highest percentage reduction in power loss, reaching 94.05% across all scenarios. Figure 5 further illustrates significant improvements in the network's voltage profile, attributed to the simultaneous placement of AVRs and DGs in Scenario IV.

#### 4 CONCLUSION

This study examines the simultaneous placement of Automatic Voltage Regulators (AVRs) and Distributed Generators (DGs) in the IEEE 69-bus system to minimize energy losses in the distribution network. The optimization process is structured into three scenarios: Scenario-I, focusing on optimal DG allocation; Scenario-II, emphasizing optimal AVR allocation; and Scenario-III, combining DG and AVR placement. Each scenario addresses unique challenges to enhance the power system's efficiency and reliability.

To achieve these objectives, Ant Bee Colony (ABC) was employed as the optimization tool. This algorithm efficiently determined the optimal locations and capacities of DGs and AVRs, delivering a comprehensive and practical solution. Among the scenarios analyzed, Scenario-IV, involving the simultaneous placement of DGs and AVRs using ABC, achieved the highest reduction in power losses. This finding highlights the superiority of an integrated deployment approach over standalone strategies, as seen in Scenarios I, II, and III.

Additionally, Scenario-IV demonstrated a notable improvement in the voltage profile of the network. The coordinated integration of DGs and AVRs not only minimized energy losses but also enhanced voltage stability and overall system reliability. These results emphasize the importance of simultaneous resource placement in optimizing the performance of modern power distribution systems.



**Fig. 5 Voltage profile of 69-bus system**

#### References

- [1] Borka Milosevic, Miroslav Begovic, "Capacitor Placement for Conservative Voltage Reduction on Distribution Feeders," *IEEE Trans. on Power Delivery*, vol. 19, N°3 pp. 1360–1367, July 2004.

- [2] Ravindra Kollu “Optimal Conductor Selection and Capacitor Placement for Cost Minimization in Distribution Systems”, IJASRM,2455-6378.
- [3] K. R. K. V. Prasad, Ravindra Kollu “Simultaneous DG and Capacitor Placement for Energy Loss Minimization with Constant and Time Varying Load Profile”, International Journal of control theory and applications,0974-5572.
- [4] F. S. Abu-Mouti, M. E. EL-Hawary , “Optimal Distributed Generation Allocation and Sizing in Distributed Systems via Artificial Bee Colony Algorithm.” IEEE Trans. on Power Delivery, vol. 26, no.4, pp. 2090-210, 2011.
- [5] Kollu, R., Rayapudi, S. R. and Sadhu, V. L. N, “A novel method for optimal placement of distributed generation in distribution systems using HSDO,” International Transactions on Electrical Energy Systems, vol. 24, no. 4, pp. 547-561, 2014.
- [6] P. Dinakara Prasad Reddy, V.C. Veera Reddy, T. Gowri Manohar, “Application of flower pollination algorithm for optimal placement and sizing of distributed generation in Distribution systems,” Journal of Electrical Systems and Information Technology, vol. 3, no. 1, pp. 14-22, May 2016.
- [7] SU. Sultana, Azhar B. Khairuddin, A.S. Mokhtar, N. Zareen, Beenish Sultana, “ Grey wolf optimizer based placement and sizing of multiple distributed generation in the distribution system,” Energy, vol. 111, pp. 525-536, September 2016.
- [8] Neeraj Kanwar, Nikhil Gupta, K.R. Niazi, Anil Swarnkar, “Simultaneous allocation of distributed resources using improved teaching learning based optimization”, Energy Conversion and Management, vol. 103, pp. 387-400, October 2015.
- [9] D. Das, “Optimal placement of capacitors in radial distribution system using a Fuzzy-GA method,” International Journal of Electrical Power & Energy Systems, vol. 30, no. 6-7, pp. 361-367, July–Sept. 2008.
- [10] S.K. Bhattacharya, and S.K. Goswami, “A new fuzzy based solution of the capacitor placement problem in radial distribution system,” Expert Systems with Applications, vol. 36, no. 3, Part 1, pp. 4207-4212, April 2009.
- [11] Ravindra Kollu & Sharad Kumar Tiwari (2023) “An Optimal Multi-Objective Approach for Distributed Generation and AVR Placement in Distribution Networks Using IPMBSA”, Electric Power Components and Systems,51:15,1523-1545, DOI: [10.1080/15325008.2023.2199754](https://doi.org/10.1080/15325008.2023.2199754)
- [12] K. R. K. V. Prasad et.al. “Optimal Capacitor Placement, AVR Placement and Conductor Selection Along with DG Using BSA”, International Journal of Adv Science and Tech,2005-4238.
- [13] Ravindra K “Multi-Objective Approach for Optimal Placement of DG and Capacitor Along with AVR In Distribution Network”, JARDCS,1943-023X.
- [14] Prasad K “Optimal Allocation of DG and Capacitor in Distribution Network Using NSGA-II”, Journal of Test Engg & Mgt,18076-18083.
- [15] J.S.Savier and Debapriya Das, “Impact of Network Reconfiguration on Loss Allocation of Radial Distribution Systems”, IEEE Trans. Power Delivery, 2007, 22, (4), 0885-8977.
- [16] S.Ganguly and D.Samajpati, “Distributed Generation Allocation with on load tap changer on radial distribution network using adaptive genetic algorithm”, Applied soft computing journal, May. 2017.
- [17] Prasad, K.R.K.V., Ravindra, K. (2021). Optimal Allocation of AVR and DGs in Distribution Systems Using HSA. In: Nath, V., Mandal, J.K. (eds) Proceedings of the Fourth International Conference on Microelectronics, Computing and Communication Systems. Lecture Notes in Electrical Engineering, vol 673. Springer, Singapore. [https://doi.org/10.1007/978-981-15-5546-6\\_45](https://doi.org/10.1007/978-981-15-5546-6_45)